

Holstein INTERNATIONAL



- **Breeding values for gestation length: useful instruments**
- **Delicious' striking sons & reports on Byway, Chapeau and Iznogoud**
- **Progenesis, Lila Z's global influence, red factor sires & the Yoder impact**

RLI

RESISTANCE TO
INFECTIOUS LESIONS

HOOF HEALTH

2 NEW RELIABLE SCIENTIFIC PROOFS

RLNI

RESISTANCE TO
NON-INFECTIOUS LESIONS

**STOP TO
LAMENESS!**

**SECOND PATHOLOGY
FOUND IN DAIRY FARMS**

INCIDENCE FOR 100 COWS :*
6000€/YEAR

Plenty of Variety within Today's Leading RC Sires Worldwide

High milk and components, all-round fitness, strength and power: the choice of RC sires in today's breeding world is limitless. And as we can identify the best genes to work with by a simple hair sample, the rapid advancement of RC genetics is another success story of the genomic era. As in previous years, in this annual worldwide overview HI has once again pooled together a selection of top RC sires... All the highlights here!

IZZY JONES CHRISTINE MASSFELLER

GTPI or high index is not the only credential sort after by some bull breeders. Whilst of course having a favourable total index is important, a goal being pursued by some is to work into a mating as many additional qualities as possible. By this we mean further to index and type; traits like polled, A2A2, kappacasein BB and RC. Historically, to gain these additional traits often you had to settle for a bull lower down in the rankings to gain RC or polled qualities. But now, many leading RC/pollled bulls compete in the overall top rankings – and we are seeing this in many countries.

TOP STANDARD

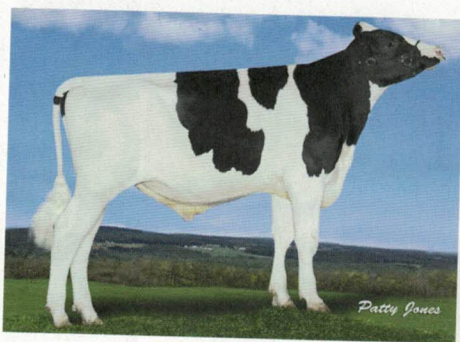
For the last 6 years HI has carried out this annual RC analysis, and in recent years there has been a particular stand-out observation: the increasing

influence of polled genetics. In 2017 six polled sires were featured on the lists, this year that number has nearly doubled to 11. Germany is a country that has fully embraced polled, and given the high standard of their polled sires – they have good reason to. Their Nr.1 RC sire is the high milk and component polled sire, Amor-P-RC (153 gRZG). Amor-P is a champion of the breeding goals mentioned at the start of this story, as aside from being polled and RC, he has the additional qualities of being kappacasein BB and A2A2. But arguably there is an even more interesting polled sire in Germany, the multi-index pleasing Battlecry-son: Born-P-RC. Not limited to Germany, Born-P also has good scores in France (202 gISU) and ranks at Nr.2 for gPLI polled in the UK (£703).

To continue the theme of multi-index satisfying sires, the US's Nr.1 and 2 sires Santoro and Successor provide discussion. At 27 gTPI, the split-embryo full-brothers are the highest gTPI sires HI has ever included in the overview and they also test well in Canada. They are out of Lesperron Kingboy Santana-VG-85-2yr, daughter of the bull dam Josey-L-Uno Sangaria VG-85-2yr, who traces back to the 2017 Red-Impact Cow Des-Y-Gen Plan Silk EX-90 from the Glen Drummond Shower family. Also from the Shower family is Shogun the Nr.1 gISET sire in Switzerland. The popular polled brood-cow Verhages Candlelight-P, who placed 2nd behind Silk in the 2017 Red-Impact competition, is well represented in the lists too. In Italy Candlelight's Balisto-son Cruyff ranks at Nr.2 for RC whilst in the UK Candlelight's



German Battlecry-son Wilder Born-P-RC tests well in various countries. He is out of Wilder Coco-P-Red VG-86 by Perfect Aiko from the Apina Massia family. The Dutch Nr.1 Smiley-RC traces back to the same family line.



Pictured is Lesperron Santorius-RC who, along with his split-embryo full-brother Successor-RC, is Nr.1 in the US and also ranks well in Canada.

grandson Conan-PP-Red leads the red ranking. Candlelight-P traces back to the 1982 Royal Champion, Continental Scarlet-Red EX-95, the only cow to beat Tony Charity in the show-ring.

SIRES OF SONS

In terms of impactful mating sires, in the US and Canada Jedi stands out, siring 10 North American sires. But in terms of a bull having a more global spread, an interesting sire is Battlecry, who is represented by his sons in Germany (Born-P), France (Matt) and the Netherlands (Smiley and Babylon).

Two other full brothers to mention are Swissbec Pat and Yoda-P, the Nr.2 and 6 gLPI RC sires. They are out of IHG Mardi Sens 9017 VG-86-2yr, whose other famous sons include Sammy-P, Whisk-P, Sharks-P and Jackpot-PP-Red. Plus: Switzerland's Lennox and Lasse are full brothers by Piranha-P from the Lila Z family (more on her inside this issue). Also in North America, brothers Apprentice (<Kingboy) and Argo by Silver are out of Blondin TJR Supersire Aroma-RC VG-85, grand-daughter of the 2009 Red-Impact Cow Kamps-Hollow Altitude-RC EX-95. Interestingly Apprentice, the former Nr.1 gTPI RC sire, is already making his mark as a sire of sons. For example his son Progenesis Hawai is the Nr.3 gLPI RC sire. Hawai traces back to OCD Planet Danica EX-93, the dam of genomic giant Miss OCD Robst Delicious (more on Delicious inside this issue). To complete Canada's top sires, like Amor-P in Germany, Canada also has a polled sire heading the rankings with Webster-P, who comes from the Ri-Val-Re Range Redwing family. At Nr.4 gLPI RC is Sandy-Valley Expresso. (If you're a North American subscriber you can read more about Expresso's dam, Sandy-Valley Eternity in The Holstein Hub, mailed alongside this copy of HI.) Of the 54 bulls featured in the list they represent 33 different mating sires. As this article's story says - there is certainly plenty of variety in today's top RC sires! ●

Table - A selection of high-ranking, red-carrier sires worldwide. Genomic bulls in regular print, daughter-proven bulls in italics. HL = longevity, SCS = somatic cell count, FER = fertility. All figures with due reservations.

NAME	TI	REL	M	%F	%P	F	P	PEDIGREE	TYPE	MS	F&L	HL	SCS	FER	OWNER
CANADA															
LPI															
Progenesis Webster-P	3418	74	1921	+0.11	+0.15	84	79	Franchise x Delta	10	11	6	111	2.88	110	Semex
Swissbec Pat	3395	76	1546	+0.12	+0.10	71	63	Jedi x Mardi Gras	12	12	9	113	2.68	110	Select
Progenesis Hawai	3351	75	1844	+0.27	+0.13	97	77	Apprentice x Silver	8	9	6	112	2.57	108	Semex
Sandy-Valley Expresso	3339	75	2069	+0.12	+0.05	90	73	Apprentice x Rubicon	8	9	6	111	2.73	112	Semex
Lesperron Santorius	3325	75	2055	+0.09	+0.15	83	85	Jedi x Kingboy	8	8	6	109	2.70	109	Semex
Lesperron Successor	3325	75	2055	+0.09	+0.15	83	85	Jedi x Kingboy	8	8	6	109	2.70	109	Semex
Swissbec Yoda-P	3316	75	1900	+0.04	+0.10	77	75	Jedi x Mardi Gras	8	8	8	110	2.82	111	Cogent
EDG Rubi-Asp	3264	76	1075	+0.52	+0.23	96	60	Rubicon x McCutchen	10	9	10	109	2.65	106	TWG
Gen-I-Beq Aikman	3189	97	1378	+0.49	+0.24	107	74	Snowman x Baxter	7	6	6	104	2.61	103	GenerVations
Swissbec Brekem	2950	99	682	+0.23	+0.29	50	57	Bookem x MOM	8	8	6	109	2.79	104	Semex
Dymenthalm Sympatico	2903	98	1960	-0.02	-0.10	71	53	Snowman x Planet	7	4	10	109	2.78	102	Semex
FRANCE															
ISU															
Matt	210	70	969	-0.13	+0.20	35	28	Battlecry x Brekem	3.2	3.1	1.5	3.0	4.2	1.7	Genes Diffusion
Mover-P	196	70	455	+0.27	+0.13	32	23	Dover-P x Jacey	2.4	2.7	0.8	1.7	3.0	2.5	Evolution
Joao	177	75	-116	+0.78	+0.25	50	18	Perfect Aiko x Snowman	2.9	2.3	1.6	1.3	1.6	1.4	Genes Diffusion
GERMANY															
RZG															
Amor-P	153	71	1848	+0.17	+0.17	92	81	Apoll x Balisto	106	104	100	111	106	95	Göpel
Emperor	152	71	1138	+0.08	+0.10	53	48	Jedi x Day	125	134	106	138	115	106	Masterind
Bumper	151	71	1301	+0.17	+0.10	70	54	Bolaro x Aikman	126	118	123	119	102	118	RinderAllianz
Born-P	150	71	546	+0.54	+0.21	76	40	Battlecry x Perfect Aiko	125	119	120	132	126	108	RUW
Arktos	149	71	966	+0.30	+0.13	69	46	Araxis x Olympian	131	129	116	121	125	105	RUW
Arktis	149	71	971	+0.30	+0.13	69	46	Araxis x Olympian	131	129	116	121	125	105	RUW
Afrikus	141	93	1078	+0.10	+0.07	54	44	Alchemy x Manifold	112	123	92	118	120	113	RSH
Bocelli	139	97	1264	-0.24	+0.03	25	46	Bookem x Destry	96	95	97	129	116	125	LTR/ZBH
Sosmar-P	138	82	1461	+0.08	+0.14	66	64	Snow x Lawn Boy	113	110	104	104	90	92	Masterind
ITALY															
PFT															
Chemello Camirap	3016	75	438	+0.43	+0.27	66	44	Raptown x Niagra	2.42	2.73	3.58	111	108	101	Intermizoo
Schreur Cruyff-P	2903	75	1628	+0.33	+0.25	91	79	Balisto x Lawn Boy	1.59	1.08	-0.28	108	104	94	Intermizoo
Ceresio Windjet	2519	92	2519	+0.09	+0.02	60	47	Windbrook x Ralstorm	2.00	1.84	2.67	107	107	99	Inseme/S.Italy
NETHERLANDS															
NVI															
Wilder Smiley	361	63	609	+0.57	+0.19	78	38	Battlecry x Brekem	107	110	104	1010	111	102	CRV
Babylon	340	63	1335	-0.07	-0.16	50	31	Battlecry x Sympatico	108	112	103	977	109	104	K&L
Groenibo Bram	336	66	1231	-0.07	+0.16	46	58	Bolt x Stellando	107	107	105	760	112	101	CRV
Molenkamp Bolt	325	88	999	-0.13	+0.17	30	51	Bookem x Spencer	109	109	107	688	110	102	GGI
Apina Malcolm	269	91	1512	-0.04	+0.03	60	55	Stellando x Ramos	108	100	113	399	104	99	CRV
SCANDINAVIA															
NTM															
VH Nolan	31	78	107	113	109	120	113	Nugget x S Ross	101	113	122	110	112	110	Viking
SWITZERLAND															
ISET															
Villstar Lasse Z	1534	67	1095	-0.05	+0.31	38	64	Piranha x Delect	123	127	113	113	109	124	Select Star
Villstar Lennox Z	1534	67	1097	-0.05	+0.31	38	64	Piranha x Delect	123	127	113	113	109	124	Select Star
TGD-Holstein Cohen-P	1508	67	1582	+0.04	+0.16	66	66	Powerball x Destined	122	119	104	120	114	122	Swissgenetics
Willsbro Nugget	1587	79	664	+0.52	+0.18	73	38	Uno x Destry	118	121	118	140	123	143	RUW
USA															
TPI															
Lesperron Santorius	2794	76	1902	+0.01	+0.04	73	68	Jedi x Kingboy	2.37	1.85	1.36	8.5	2.76	3.6	Semex
Lesperron Successor	2794	76	1902	+0.01	+0.04	73	68	Jedi x Kingboy	2.37	1.85	1.36	8.5	2.76	3.6	Semex
Holyland Simplicity-P	2768	77	1812	+0.05	+0.01	82	57	Modesty x Relief	2.66	2.80	2.47	7.0	2.88	1.7	Select
Aprday-F Modesty Anselmi	2723	76	1801	+0.06	+0.06	84	69	Modesty x Olympian	1.68	2.32	0.53	7.2	3.01	2.0	ABS
Endco Apprentice	2700	79	1491	+0.03	+0.02	65	50	Kingboy x Supersire	2.29	2.32	1.21	9.0	2.67	3.0	Semex
Endco Argo	2699	79	953	+0.13	+0.06	70	46	Silver x Supersire	2.23	2.83	1.49	8.4	2.65	2.0	Jetstream
Kenmore Jedi Skywalker	2682	76	1424	+0.03	+0.06	61	61	Jedi x Day	1.28	1.30	1.39	8.7	2.75	4.4	TWG
Swissbec Yoda-P	2679	76	1569	+0.02	+0.04	64	56	Jedi x Mardi Gras	2.00	1.87	2.00	7.2	2.97	3.9	Cogent
Seagull-Bay Chr Elder	2673	75	770	+0.15	+0.06	70	42	Charismatic x Balisto	1.46	1.70	2.35	9.9	2.69	3.1	TWG
OCD Jedi Sawyer	2663	77	2369	-0.05	+0.01	75	74	Jedi x Snowman	1.95	2.04	1.50	6.5	2.76	-0.2	Select
Kenmore Jedi Chancellor	2660	76	2017	-0.06	+0.03	58	70	Jedi x Day	1.07	1.55	1.34	9.2	2.73	2.6	Select
Flevo Genetics Whatsapp	2486	86	145	+0.15	+0.09	44	28	Supersire x Super	1.46	1.96	1.03	8.4	2.72	4.2	CRV
Ri-Val-Re Rager-Red	2481	94	1400	+0.04	+0.02	62	47	Relief-P x Observer	2.14	1.69	1.26	5.8	2.86	2.0	Select
Dymenthalm Sympatico	2415	99	1558	+0.03	-0.03	65	38	Snowman x Planet	1.60	1.83	1.20	4.6	2.77	1.0	Semex
Buck-H-Creek Mgl Piranha-P	2359	90	873	-0.02	+0.04	27	37	Mogul x Secure	2.45	3.24	1.73	4.2	3.00	1.2	CRV
UK															
PLI															
Koepon Classmate	693	67	690	-0.01	-0.02	26.220.4		Atwork x Olympian	2.49	2.13	1.01	0.7	-0.10.7		Genes